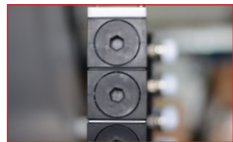
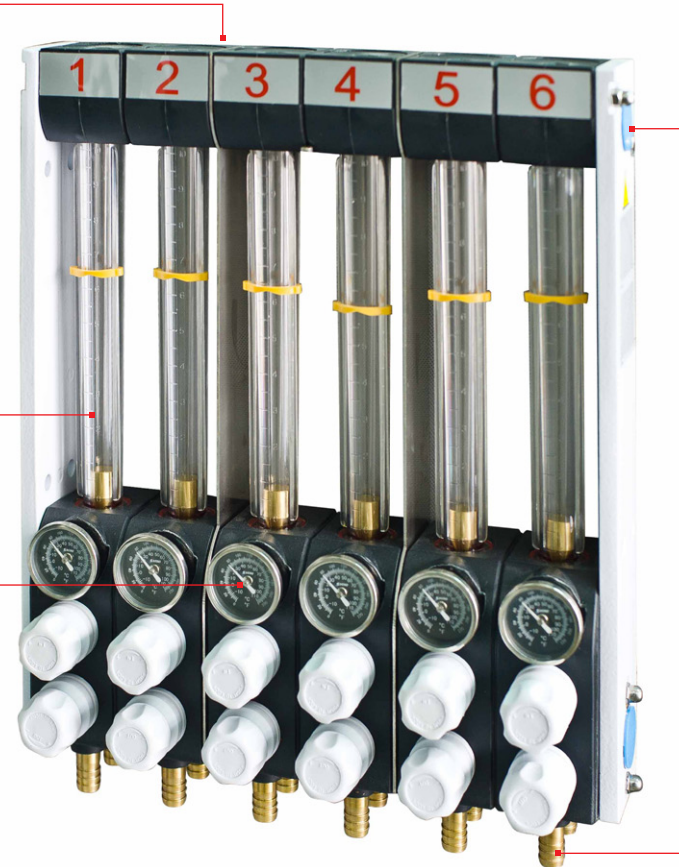
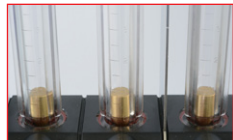


# SFR

## Water Flow Regulator



**Plugs**  
sections are being equipped with plugs, which gives a possibility to inspect and clean



**Pipes with markers**  
gives a possibility to mark correct flow for each section



**Thermometers**  
ensures an easy control for each section temperature



**Process water**  
can be connected on each side of device



**Solid hinge**  
ensures a comfortable usage (optional)



**Fast connectors**  
ensures a fast set-up device



**Cleaning brush**  
is a standard