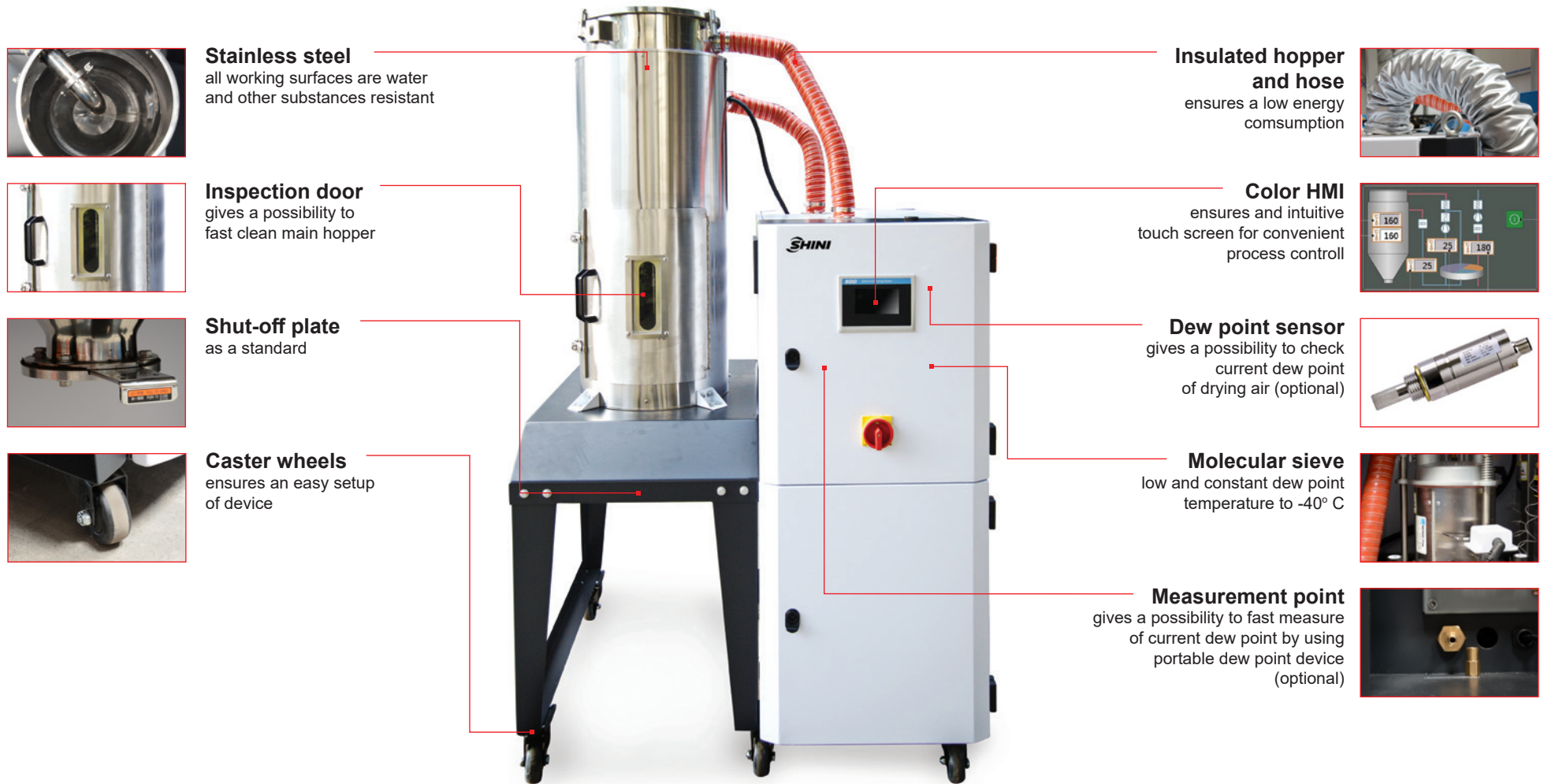


SDD-U

Dehumidifying Dryer



Stainless steel
all working surfaces are water and other substances resistant



Inspection door
gives a possibility to fast clean main hopper



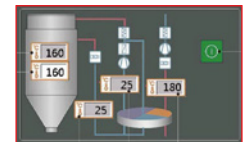
Shut-off plate
as a standard



Caster wheels
ensures an easy setup of device



Insulated hopper and hose
ensures a low energy consumption



Color HMI
ensures and intuitive touch screen for convenient process control



Dew point sensor
gives a possibility to check current dew point of drying air (optional)



Molecular sieve
low and constant dew point temperature to -40° C



Measurement point
gives a possibility to fast measure of current dew point by using portable dew point device (optional)